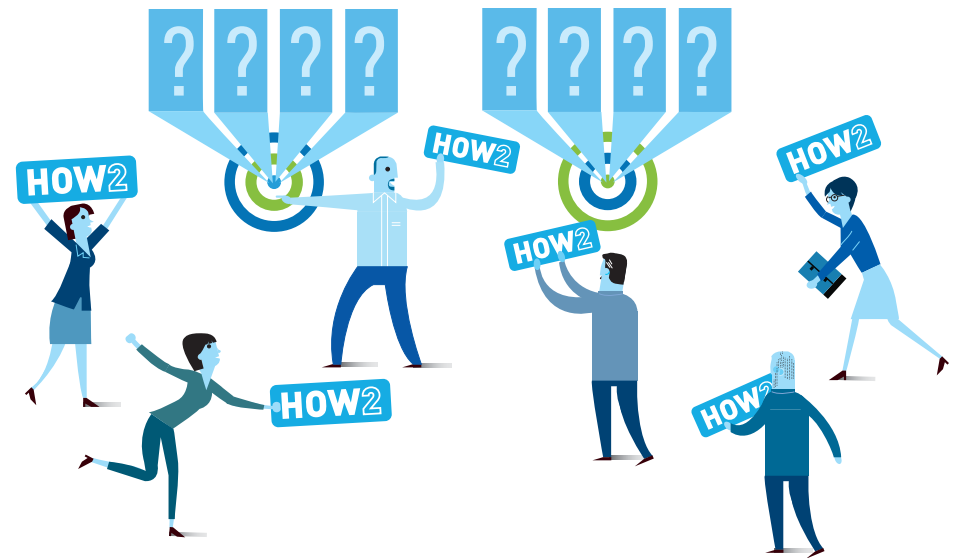
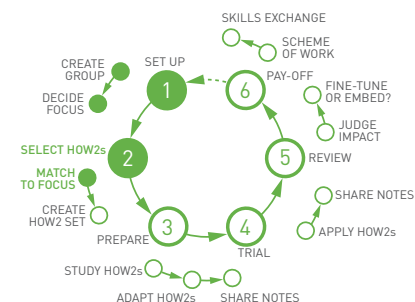
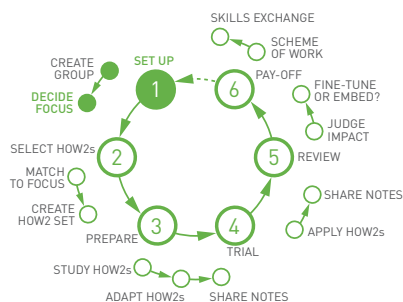
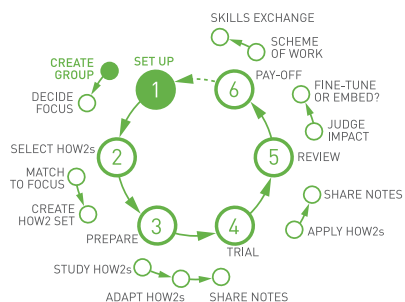


Supported Experiments with HOW2s

HOW2s add rigour and efficiency to Supported Experiments with tools for action research, communication and the sharing of best practice.





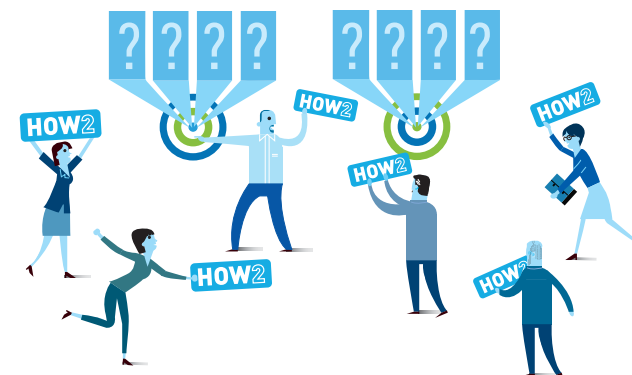
SET UP GROUP

Set up a Group of teacher colleagues for your Supported Experiment.



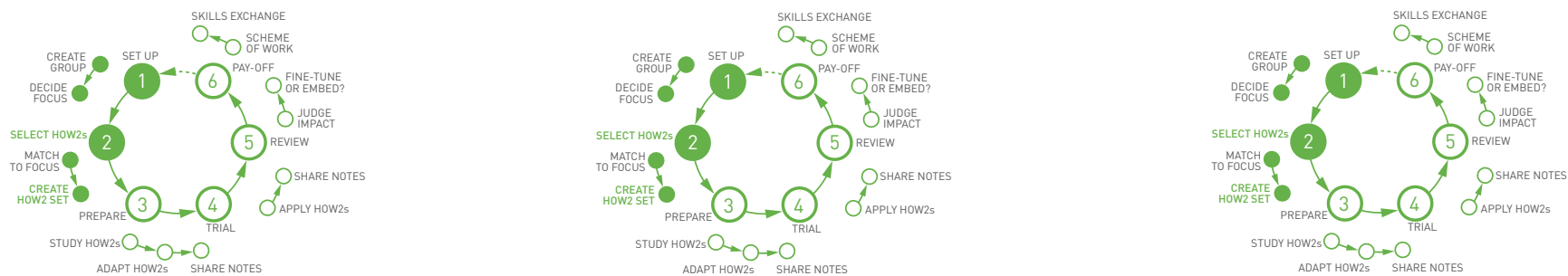
DECIDE FOCUS

In your newly formed team, decide the focus for your collaborative experiment.



SELECT HOW2S

Together, match a selection of HOW2s to your focus.



Create a Set

NAME
Ian Harris for coaching

DESCRIPTION
This set includes the three HOW2s we agreed at our second coaching session. The aim is for Ian to try them out by the end of term.

HOW2s
 Assessment Assessment Which is Which? Why is this good?

INCLUDE THIS SET IN THE HOW2 LIBRARY FOR ALL OF MY COLLEAGUES

CREATE SET

CREATE A SET OF HOW2S

Now, organise the selected HOW2s into a Set.

Add Nudge

TITLE
Our summer Supported Experiment HOW2s and timeline

DESCRIPTION
Hello all,
Please find attached the Set of HOW2s we agreed will form the basis of our experiments. Also note these dates we finalized for by when we will all attain the Working On It (2 June) and Embedded It (2 July)

ATTACHMENTS
Summer Supported Experiment HOW2s X

ASSIGNED USER(S) AND GROUPS
Summer Supported Experiment team X

HOW SHOULD THIS NUDGE BE COMPLETED?
Collaboratively: This task will be shared between recipients

DEADLINE
29 May, 2015

SEND NUDGE

SEND NUDGE

Send all your team a Nudge with the Set of HOW2s attached. Include due dates by when they should aim for the statuses to be *Working On It*, and *Embedded It*.

Hello, Oliver

You're working on:

Collect: Culi Connect

The teacher collects learners' ideas over the whole term. Students then rank to system...

Differentiating Manipulatives

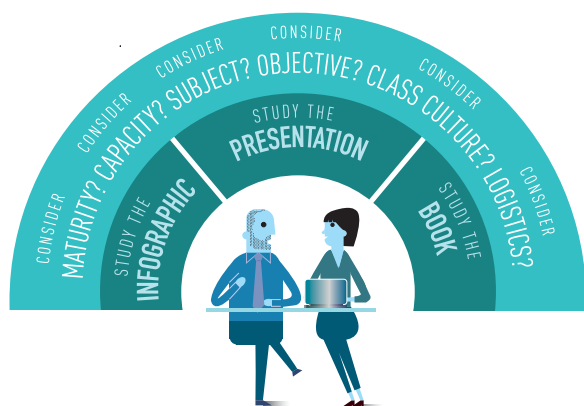
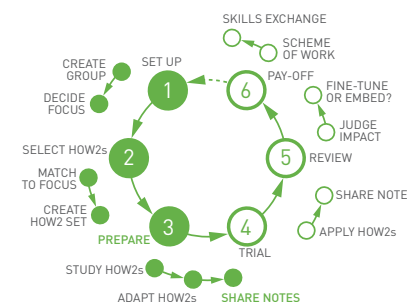
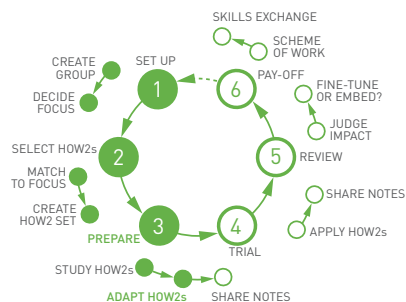
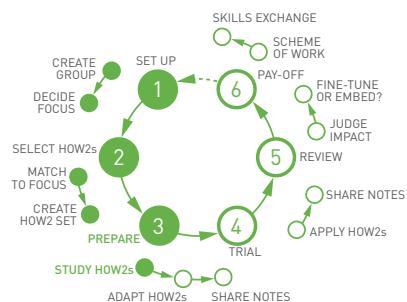
Very levels of complexity, detail and relevance to make manipulatives more or harder...

Nudges due next

TITLE	ISSUED	CREATED BY
<input type="checkbox"/> Does a sub-set for looking at structure and settings and... View	19 May 2015	IAN HARRIS
<input type="checkbox"/> Do discuss at next meeting... View	19 May 2015	IAN HARRIS

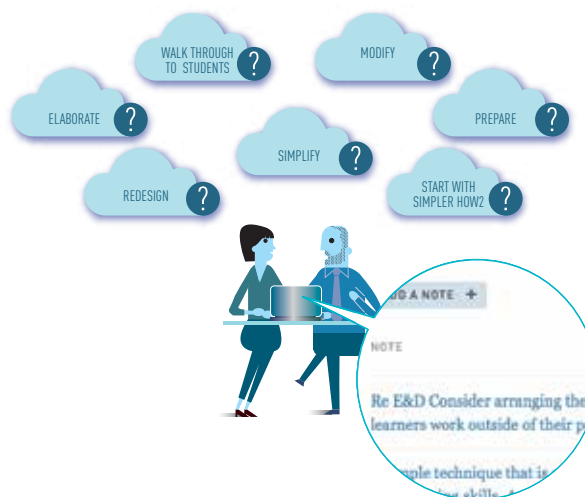
TEAM RECEIVES NUDGES

Your team colleagues will receive the Set on their Nudge section of their Home page.



STUDY HOW2S

Teachers in the team —either individually or together — study the HOW2s in the Set with a view to any necessary adaptations needed to fit the contexts of their different classes.



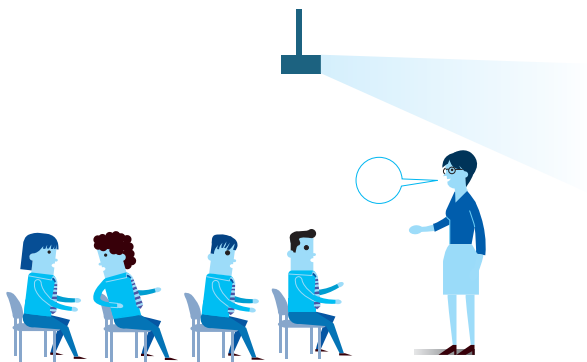
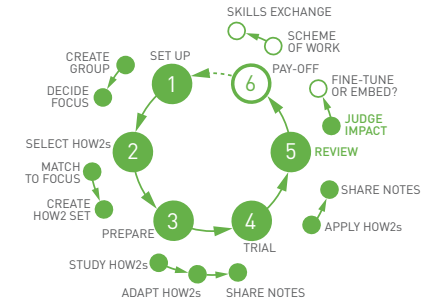
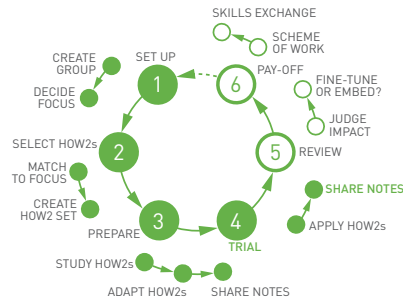
ADAPT HOW2S

Working again individually or together, adapt the selected HOW2s for your classes, capturing your plans in your Notes.



SHARE NOTES

Share, read and comment on each others' Notes.



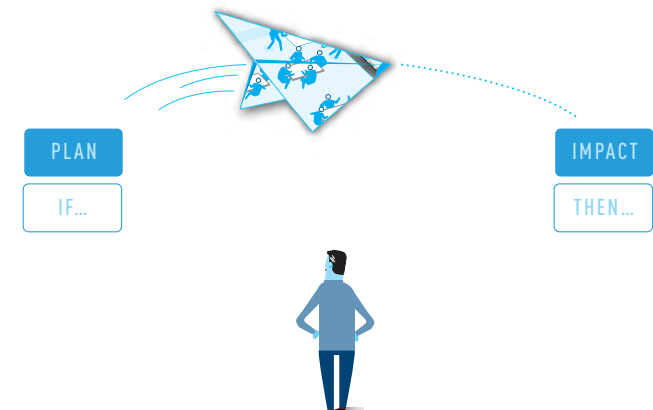
APPLY HOW2S

Try out your HOW2 plans, using the Notes to capture what happens.



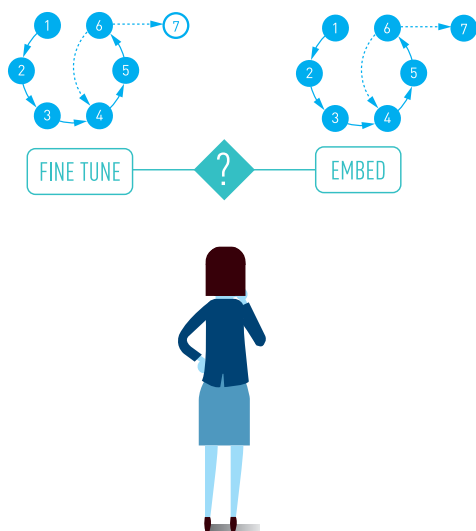
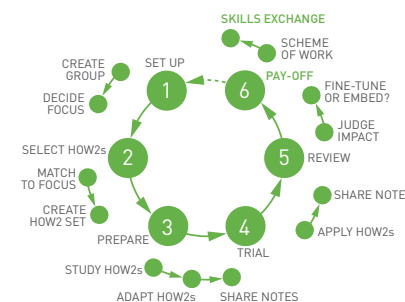
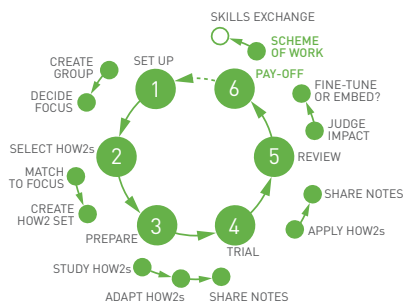
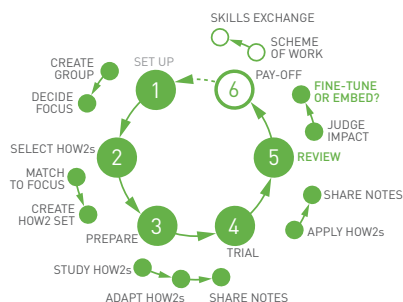
SHARE NOTES

Read each others' Notes and make comments and suggestions.



REVIEW IMPACT

Review the impact of your HOW2 experiments in the Notes and continue to share and comment on colleagues' judgments.



CONCLUDE

Decide, with your colleagues, whether the experiments were successful, and whether the HOW2s can be embedded into practice. Or whether some of the HOW2s need further fine-tuning and experimentation.



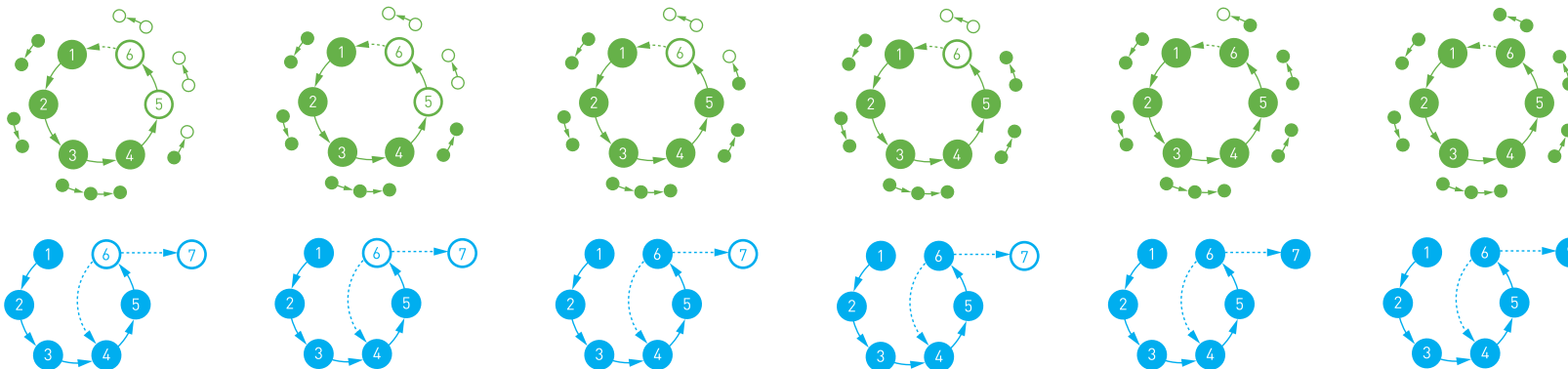
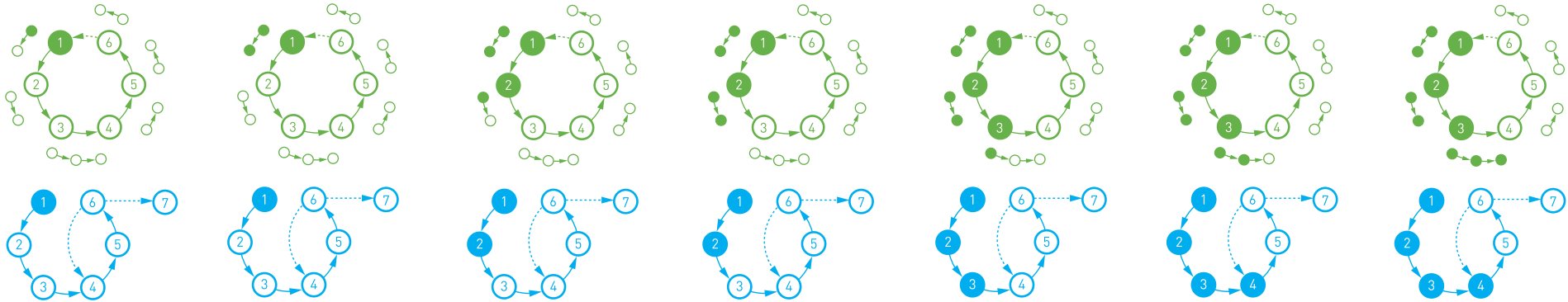
SCHEMES OF WORK

Add the newly developed HOW2s to your repertoire and embed them into relevant Schemes of Work.



SKILLS EXCHANGE

Contribute the team's skills into the Skills Exchange to spread the benefits of their learning across the organisation.



THE HOW2 PROCESS

Whatever the CPD activity, the HOW2 process applies and aligns to it. Above, you see how it matches to the stages of the Supported Experiments process.

